

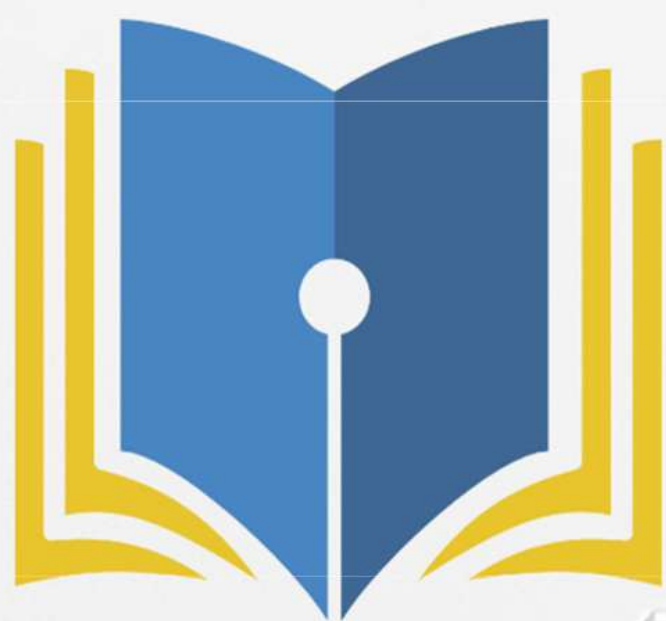


Chikitsak Samuha's
Sir Sitaram & Lady Shantabai Patkar College of Arts & Science
AND V.P.Varde College of Commerce & Economics
S. V. ROAD, GOREGAON (WEST), MUMBAI-400 104
(AN AUTONOMOUS COLLEGE AFFILIATED TO
UNIVERSITY OF MUMBAI)
"REACCREDITED WITH 'A+' GRADE BY NAAC (3RD
CYCLE) ISO 9001: 2015, BEST COLLEGE OF 2016-17 , DBT
STAR SCHEME AWARDEE"



WEEKEND CHRONICLE

WINDOW TO YOUR
KNOWLEDGE



AN INITIATIVE BY
B.M.S DEPARTMENT

MAIL ID:- bmseperiodical@gmail.com



A MESSAGE FROM CHIEF EDUCATION OFFICER'S DESK

Dear Readers,

“Develop a passion for learning. If you do, you will never cease to grow.” We live today in a world that is so very different from the one we grew up in, the one we were educated in.

The world today is moving at such an enhanced rate and we as educationalists need to cause and reflect on the entire system of education. On-line learning provides new age technology to widen the educational scope. It prepares students to succeed in an increasing technology driven global economy. Technology makes life much easier, most of all it saves time and energy. It is one of the fastest growing field right now and there is no sign of stopping anytime soon.

It is indeed a great moment for all of us to bring forth this weekly E-Periodical “Weekend Chronicle”. We are sure this E-Periodical will help to acquire knowledge and skills, build build character and enhance employability of our young talented students to become globally competent. There is something for everyone here, right from the fields of Business, Academics, Travel and Tourism, Science and technology, Media and lot more. The variety and creativity of the articles in E-Periodical will surely add on to the knowledge of the readers. I am sure that the positive attitude, hard work, continued efforts and innovative ideas exhibited by our students will surely stir the mind of the readers and take them to the fantastic world of joy and pleasure.

**Dr. Mala Kharkar
Chief Education Officer
(Patkar-Varde College)**



A MESSAGE FROM THE PRINCIPAL'S DESK

Dear Readers,

As we know, "An Investment in knowledge pays the best interest."

Hence in this regard the E-Periodical Weekend Chronicle is playing a vital role in providing a platform to enhance the creative minds of our students of BMS Department.

The E-Periodical i.e online magazine drives us through varied genres containing- News related to Global affairs under departments like Business, Advertisement, IT and Science & Nature to intellectual news articles under Academics, Media and Library Departments. It also covers articles related to Food & Health care, Culture & Cuisine and Travel & Tourism which usually tops our "bucket lists" including article which address societal problems under Department of Social Issues. Lastly covering words and vision of our talented students as budding poets, writers and thinkers under Student's section Department.

Over all this vision of constructing E-Periodical by students will engage today's youth and the crafters of the youth (teachers) in their communities which is the necessity to over come hurdles of present reality. We will strive to make a better world through our acts and thoughts. Rather it is a challenge to be met!!!

**Dr. Shrikant B Sawant
Principal
(Patkar-Varde College)**

CONTENT



BUSINESS

PAGE 1

- 94% INDIAN CEOs WANT EMPLOYEES TO RETURN TO OFFICE ONLY AFTER COVID-19 VACCINATION: KPMG
- INVESTOR WEALTH RISES 102% SINCE LAST YEAR'S HISTORIC MARKET CRASH.

ADVERTISEMENT

PAGE 2



- ROYAL GREEN PARTNERS WITH SONU SOOD FOR NEW CAMPAIGN.
- BLUE STAR ROLLS OUT NEW CAMPAIGN FEATURING VIRAT KOHLI.
- IPL 2021:PHONEPE BECOMES THE OFFICIAL CO-PRESENTING SPONSOR FOR TV BROADCAST.LATEST CAMPAIGN.



INFORMATION TECHNOLOGY

PAGE 3

- ENCRYPTION VS COMPLIANCE : THE NEW IT ACT GUIDELINES PUT MESSAGING SERVICE LIKE WHATSAPP IN A TIGHT SITUATIO
- EXPLAINED: HOW GOOGLE PLANS TO SERVE ADS ONCE COOKIES ARE DEAD



SCIENCE & SPACE

PAGE 4

- SYMBIOTIC STARS



NATURE

PAGE 5

- FINE PARTICULATE MATTER FROM WILDFIRE SMOKE MORE HARMFUL THAN POLLUTION FROM OTHER SOURCES

RESEARCH

PAGE 6



- THE ROLE OF RESEARCH ON SCIENCE TEACHING AND LEARNING

ACADEMICS

PAGE 7



- CAREERS WITH HIGHEST PROJECTED JOB GROWTH.
- HOW TO DEVELOP YOUR SKILL SET TO ADVANCE YOUR CAREER

MEDIA

PAGE 8



- ROLE OF SOCIAL MEDIA IN YOUTH ENTREPRENEURSHIP
- INDIAN MOBILE WEBSITES SCORE HIGH ON PAGE DESIGN, BUT LOW IN SPEED: GOOGLE

ART & HISTORY

PAGE 9



- QUEEN ELIZABETH 1
- MINAKSHI TEMPLE

LIBRARY

PAGE 10



- PINGALA - CREATOR OF BINARY SYSTEM

FOOD & HEALTHCARE

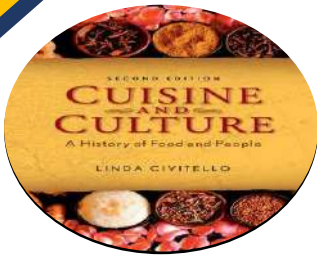
PAGE 11



- THREE MYTHS ABOUT FOOD AND NUTRITION

CULTURE & CUISINE

PAGE 12



- WHY IS HOT DOG CALLED A HOT DOG?
- TRADITIONAL EASTER FOOD FROM AROUND THE WORLD

TRAVEL & TOURISM

PAGE 13



- "BUDDHA, MAHABODHI TREE AND THE LAND OF NIRVANA"
- NATURE'S ABODE - WAYANAD KERALA

SPORTS

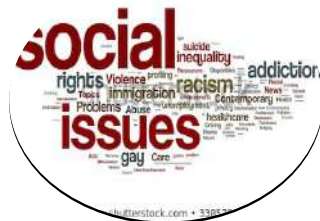
PAGE 14



- ENVIRONMENTAL CHANGES CAUSED BY SPORTS ACTIVITIES

SOCIAL ISSUE

PAGE 15



- COVID-19 CASES ARE RISING AGAIN
- GENDER DISCRIMINATION – THE UNFINISHED BUSINESS OF 21ST CENTURY

STUDENT'S SECTION

PAGE 16



- RIDDLES
- FUN FACTS
- SUDOKU
- ART BY STUDENT

BUSINESS**94% INDIAN CEOS WANT EMPLOYEES TO RETURN TO OFFICE ONLY AFTER COVID-19 VACCINATION: KPMG.**

About 94 per cent CEOs of major Indian companies plan to ask their employees to return to office only after getting vaccinated, while 76 per cent CEOs will wait for more than 50 per cent of population to be vaccinated before returning to the office, a survey by accounting firm KPMG has found.

KPMG's 2021 CEO Outlook Pulse Survey interviewed 500 CEOs of 'world's most influential companies' from 11 key markets, including US, UK, China, India. The survey was conducted between January 29-March 4, 2021 and covered 11 key industry sectors.

"Nine out of 10 leaders globally (90 per cent) intend to ask their employees to report when they have been vaccinated in order to protect the wider workforce. In India 94 per cent CEOs intend to do so," it said.

Significantly, 45 per cent of global CEOs don't expect to return to normalcy in 2021, while only one-third (31 per cent) are anticipating a return to normal in 2021.

"CEOs of the world's most influential companies are planning what a return to 'normal' will look like, but their workforces' lack of access to a COVID-19 vaccine is forcing them to rethink their strategies," KPMG said.

Though many factors can influence CEO predictions, the perceived pace of vaccination distribution is prominent. About 55 per cent of global business leaders are concerned that not all of their employees will have access to a COVID-19 vaccine, which could put their operations or certain markets at a competitive disadvantage. Similarly, only 30 per cent of global executives as compared to 32 per cent Indian executives are considering a hybrid model of working for their staff post-COVID, where most employees work remotely 2-3 days a week.

"As a result, only one-fifth (21 per cent) of businesses globally are looking to hire talent that works predominantly remotely. In India this number is at about 22 per cent. This is a significant shift from last year (73 per cent in 2020 globally as compared to 77 per cent in India)," KPMG said.

66 per cent CEOs in India felt that the pandemic has accelerated the digitisation of operations and creation of next-generation models. However, with remote working becoming the norm during lockdowns, cyber security has emerged as the top concern impacting the growth and operations of companies globally as well as in India. KPMG Global Chairman and CEO Bill Thomas said that before making any major decisions, CEOs want to be confident that their workforce is protected against the virus.

"The COVID-19 vaccine rollout is providing leaders with a dose of optimism as they prepare for a new reality. CEOs are scenario planning for certain key markets that may experience vaccine shortages that could impact their operations, supply chains and people, leading to uneven economic recovery," he added.

Viren rathod
(NEWSCASTER)
Ref: m.businessstoday.in

INVESTOR WEALTH RISES 102% SINCE LAST YEAR'S HISTORIC MARKET CRASH.

Investors have gained Rs 103.78 lakh crore or 101.88% in market wealth since March 23 last year when rising coronavirus cases and the resultant lockdown in 75 districts took a heavy toll on investor sentiment.

On March 23, 2020, market cap of BSE-listed firms fell to Rs 101.86 lakh crore against market cap of Rs 205.64 lakh crore today. The decline in market cap came after Sensex and Nifty logged their highest losses ever. While Sensex lost 3,934 points to 25,981, Nifty closed 1,135 points lower at 7,610.

Sensex closed at 50,051 today, clocking a gain of 24,070 points or 92.64% in one year. Nifty ended at 14,814 today, climbing 7,204 points or 94.66% during the period. However, Sensex and Nifty have fallen 4.69% and 4% till date from their record highs hit on February 16.

Sensex and Nifty scaled record highs of 52,516 and 15,431 on February 16 this year led by extension of gains after investors cheered Union Budget on February 1.

The weakness in the benchmark indices came after Indian markets were impacted by profit booking, weak global cues and rising coronavirus cases in the country.

Market fell for four consecutive sessions last week amid the effect of rising US bond yields on global markets and weakening of investor sentiment due to resurgence of coronavirus cases. Sensex ended 280.15 points higher at 50,051 and Nifty advanced 78.35 points to 14,814.75.

The rally was led by sharp gains in index majors such as HDFC Bank, ICICI Bank and Reliance Industries.

Top Sensex gainers were Ultratech Cement, IndusInd Bank, ICICI Bank and HDFC Bank rising up to 3.06%.

Commenting on the technical outlook, Gaurav Ratnaparkhi, Senior Technical Analyst, Sharekhan by BNP Paribas said, "Nifty witnessed continuation in recovery on March 23. It had recently taken support near lower end of a sideways channel. Over there, it had formed a Piercing Line - a bullish candlestick pattern. In the last session, it had formed an Inside bar on the daily chart. Today, the bar pattern broke out on the upside. The overall structure shows that the index is moving from lower end of the consolidation range towards the upper end, which is near 15,000. On the other hand, 14,707 will act as a crucial near term support."

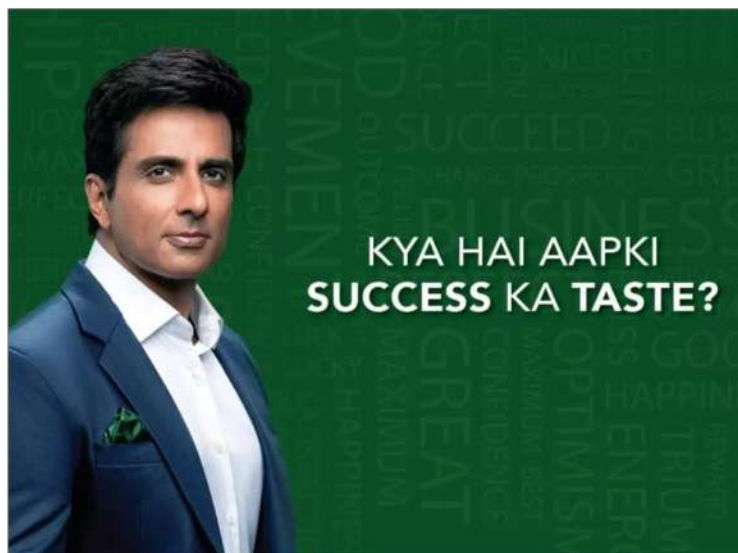
On the other hand, top Sensex losers were ONGC, PowerGrid, ITC and NTPC falling up to 2.28%.

Market breadth was positive with 1,668 stocks rising against 1292 falling on BSE. Total 166 stocks hit their 52-week highs against 52 touching their 52-week lows.

Shrikant Chouhan, Executive Vice President, Equity Technical Research at Kotak Securities said, "Market remained volatile throughout the day but finally closed above 14,800/50000 levels. The 50-day moving average was a major hurdle for the market and is positive for the medium-term trend of the market. Based on it, Nifty/Sensex could move closer to 14,950 to 15,000 (50,500/50,700) levels. Surprisingly, support is still at 14,570/49250 levels. The formation of a double bottom in the Bank Nifty is working positively. Bank Nifty is expected to move closer to 35,000. Maintain a stop loss of 33,850."

Viren rathod
(NEWSCASTER)
Ref: m.businessstoday.in

ADVERTIMENT

ROYAL GREEN PARTNERS WITH SONU SOOD FOR
NEW CAMPAIGN.

Royal Green Packaged Drinking Water has released a TVC featuring Bollywood star Sonu Sood. The TVC is about expressing yourself in an effortless way and being comfortable under your own skin. It is about having power and being able to share it with the people who let you achieve it in the first place.

The brand believes that Sood is the perfect celebrity to narrate the story of Royal Green's "Taste the Success" philosophy and belief as his personality and values perfectly align and blend in with that of the brand. The brand TVC will be shown in 5 different languages namely Hindi, Telugu, Bengali, Odia, and Punjabi. The brand film has captured Sood's tryst with success and depicts his journey of discovering and redefining what success means to him.

<https://youtu.be/FFHhyo6qnww>

Shruti Amin.
(NEWSCASTER)

Ref: brandequity.economicstimes.indiatimes.com

BLUE STAR ROLLS OUT NEW
CAMPAIGN FEATURING
VIRAT KOHLI.

Air conditioning and commercial refrigeration company Blue Star has released an ad campaign, starring brand ambassador Virat Kohli. The campaign has been rolled-out across India. Robby Mathew, chief creative officer, FCB Interface, added, "When an AC does not cool fast, it only adds to our discomfort. This is the insight that the campaign builds on, with a dash of fun and the kind of energy that Virat Kohli brings."

B Thiagarajan, managing director, Blue Star, said, "Our continuous efforts have enabled us to offer something new every season and I am glad that this time around, it is our new range of 'fast cooling' ACs. Designed to tackle harsh summers, this new range is indeed the need of the hour! We have rolled-out a new peppy campaign featuring Virat Kohli which focuses on the key benefit of 'fast-cooling' of this new range. With this campaign, we have further extended our association with Virat as his mass appeal has been enabling us to connect to and widen our TG to include Tier 3/4/5 markets."

Kshitija Chavan.
(NEWSCASTER)
Ref: ETBrandEquity.com

IPL 2021:PHONEPE BECOMES THE OFFICIAL CO-
PRESENTING SPONSOR FOR TV BROADCAST.

PhonePe is the 'co-presenting sponsor' of the TV broadcast on Star and "Associate Sponsor" of Disney+Hotstar for the digital broadcast of IPL 2021...

Digital payments platform PhonePe has announced that it has taken up 6 different sponsorships for IPL 2021. PhonePe is the official co-presenting sponsor for the television broadcast of IPL 2021 on Star Sports Network. It is also the associate sponsor for the digital broadcast of IPL on Disney+Hotstar. Additionally, this time PhonePe is also sponsoring 4 IPL franchises - Mumbai Indians, Chennai Super Kings, Royal Challengers Bangalore and Delhi Capitals. PhonePe's IPL campaign will run equally aggressively across multiple platforms including TV, digital and social media platforms.

Sameer Nigam, founder and chief executive officer, PhonePe said, "We are kicking off our most aggressive national marketing campaign ever, starting with IPL 2021 next month. We have invested even more heavily on IPL this year, taking up 6 different sponsorships. As the category leader, it is our vision as well as our ambition to bring digital payments to every Indian household. Our aggressive marketing efforts are in line with this strategic priority."

Sakshi Jadhav
(NEWSCASTER)

Ref: brandequity.economicstimes.indiatimes.com

INFORMATION & TECHNOLOGY**ENCRYPTION VS COMPLIANCE : THE NEW IT ACT GUIDELINES PUT MESSAGING SERVICE LIKE WHATSAPP IN A TIGHT SITUATION**

The recently announced guidelines for social media intermediaries under the IT Act are going to impact the concerned companies in a major way. While most of the talk is about how it will impact Facebook and Twitter, the two major social media companies, it will have a greater impact on messaging platforms like WhatsApp and Telegram. It may be noted that the new guidelines define ‘social media intermediary’ as an intermediary that allows two or more users to create, upload, share, disseminate, modify or access information using their services. This means that internet-based messaging services are also part of such intermediaries. The most significant change that is being brought into the social media spectrum by the guidelines is the responsibility of the companies to not allow its users to post content which have been barred under the guidelines, and identify the origin of such objectionable content.

To combat the menace of fake news, and the trend of inciting violence, issuing threats etc through the intermediary platforms, the guidelines state that the companies will have to identify the user who had posted such content for the first time in India. The guidelines also have a long list of the type of content which are not to be allowed on the intermediary platforms, like contents which are defamatory, obscene, pornographic, paedophilic, inciting violence, against national integrity, misleading, false etc. If the companies don’t comply with these rules, they will lose the safety harness that is provided to them under the IT Act, which shields them from any objectionable content on their networks. The same IT Act says that if the companies do not observe the due diligence defined under the act, the companies will lose the safety harness, and they will be deemed responsible for the content posted on their platforms, and their officials will be prosecuted and can be punished, including imprisonment.

Therefore, now the social media companies won’t be able to ignore orders by government or courts to remove objectionable content, and identify the originator of such content, like they had done earlier. For social media companies, it is not a big issue to implement, as the content posted on those platforms are already in the public domain, and the companies will be able to identify content that has been deemed objectionable as per the rules, and also to identify the origin of such content in India. But it poses a serious challenge for the messaging platforms, which have been built around the concept of privacy and encryption.

Ajay Lovekar

(NEWSCASTER)

Ref: www.opindia.com**EXPLAINED: HOW GOOGLE PLANS TO SERVE ADS ONCE COOKIES ARE DEAD**

In January 2021, Google announced plans to phase out support for third-party cookies on its Chrome browser. Now, the company has said it will not be building new technology to support user tracking on its browser, once the cookies are phased out. The decision will have a significant impact on digital advertising given that Chrome is the most popular browser across the world. It also heralds a shift in Google’s approach, which is pitching itself as more privacy-centric. But what is the significance of Google’s latest announcement? We explain. In January, Justin Schuh, Director at Chrome Engineering, wrote that the company planned to stop support for third-party cookies on the Chrome browser over the next two years. In a new blog post on March 3, David Temkin, Director of Product Management, Ads Privacy and Trust has clarified that Google will “not build alternate identifiers to track individuals as they browse across the web, nor will it use them in its products”

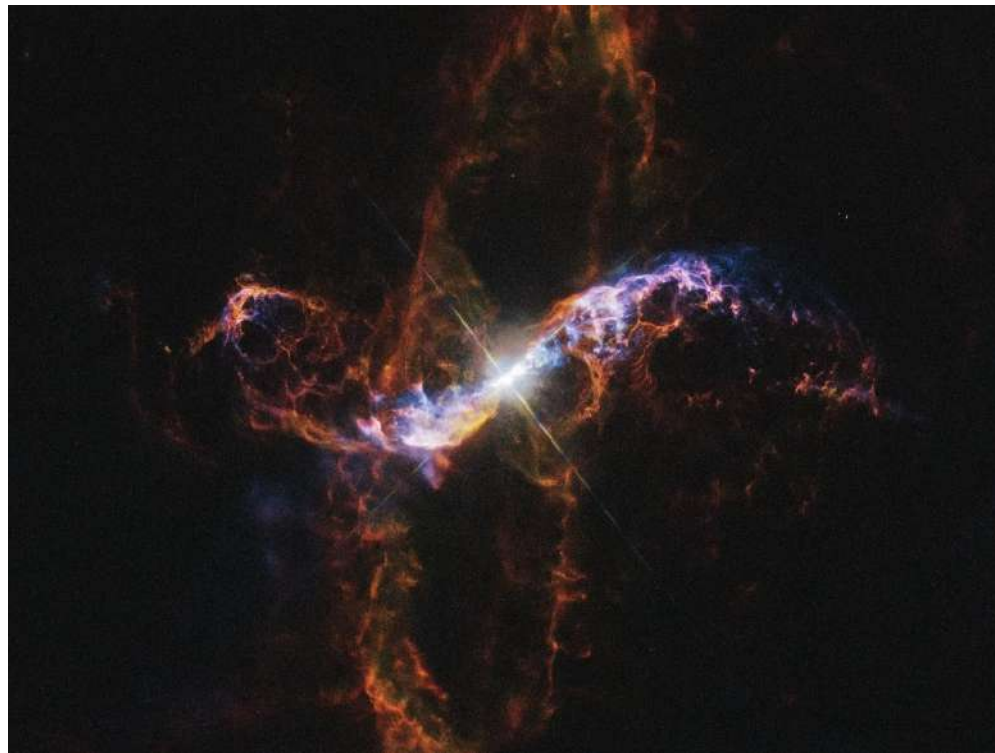
This means once third-party cookies are phased out, Google won’t have other tools for user tracking. It should be noted that Apple’s Safari browser and Mozilla’s Firefox are already blocking all third-party cookies. Third-party cookies help websites and advertisers track user behaviour on the web. For instance, if you browse for some products on a website, and later find advertisements for those same products appearing on a social media platform, it is due to the third-party cookies, which are being used to track your behaviour. Once Google phases them out, it will become harder to push targeted ads and this will impact both the effectiveness and pricing of ads. Temkin’s blog post says many users are now convinced they are being tracked all the time and are not sure about their privacy.

So any other alternative tracker will also not “meet rising consumer expectations for privacy.” More importantly, Google is not sure whether these alternatives will withstand scrutiny from “rapidly evolving regulatory restrictions” and hence does not consider this as a “sustainable long-term investment”. Given Google is facing antitrust investigations in the US and in other countries, a new tech which can help track user behaviour will likely cause more problems and comes under the scanner of regulators. In the new regime, Google’s web products will be “powered by privacy-preserving APIs which prevent individual tracking while still delivering results for advertisers and publishers”. According to the post, advertisers will retain their success rates while now tracking individual users.

Ajay Lovekar

(NEWSCASTER)

Ref: indianexpress.com

SCIENCE & SPACE**SYMBIOTIC STARS**

For the first time, stars snacking on their stellar neighbours outside the Milky Way have had their orbits fully mapped. Using the Sloan Digital Sky Survey, astronomers have identified two pairs of stars beyond the galaxy that are consuming their companions. The new discovery can help astronomers understand if distant galactic environments function similarly to or differently from the Milky Way. It can also provide insight into one of the fundamental methods of measuring distance in the night sky.

More than half the stars in the Milky Way come in pairs. While it seems likely that binary stars should make up a significant fraction of other galaxies, scientists have been unable to confirm that because at such large distances ordinary stars are too faint to see. But so-called symbiotic stars, where one companion consumes the other, can be extremely bright, making them easier to observe.

Although a pair of stars may be born together, they can age differently due to their masses. The more massive of the two will quickly burn through its material to reach the end of its lifetime first. If that star is large enough, it will leave behind a compact white dwarf. Although small and dim, white dwarfs can pack the mass of the sun into an object the size of the Earth. If close enough, the gravity of the dense objects can pull material from their companion, creating a signal that astronomers can identify from extremely far away.

While astronomers know that stellar pairs are common in the Milky Way, they remain uncertain how large a fraction they make up in other galaxies. The properties of binary systems likely depend on the environment that they formed in. Those environmental properties can vary vastly between galaxies.

For the last decade, Sloan Telescope's Apache Point Observatory Galactic Evolution Explorer (APOGEE) survey has studied the sky, gathering data about hundreds of thousands of stars in the Milky Way and its nearest galactic neighbours. These include the Draco dwarf spheroidal galaxy and the Small Magellanic Cloud (SMC), roughly 260,000 and 200,000 light-years respectively.

Draco is an ancient galaxy, a hundred thousand times smaller than the Milky Way, and is dominated by dark matter rather than stars. The SMC is younger and larger, only 200 times smaller than our galaxy and composed of old and young stars. Both galaxies are home to a symbiotic stellar pair visible to APOGEE, the Draco C1 and LIN 358 pair, respectively.

Slurping material from the neighbouring stars only allows astronomers to identify the pair. The Doppler shift the same phenomena responsible for causing train whistles to reach a higher pitch as they move closer and lower as they move farther away also causes changes in the frequency of light coming from a star, depending on whether it is moving closer to or farther from the observer. That back-and-forth motion can help astronomers to calculate the full orbit of the binary system and the masses of both stars.

By combing through several years of APOGEE data, Washington realized that the stars in Draco C1 take roughly three Earth years to orbit one another, while LIN 358's components take just over two. The results reveal the first full orbital measurements of any symbiotic star system outside the Milky Way. The new measurements will help astronomers better understand star formation in other galaxies.

Facts:

The variable star R Aquarii is in fact two stars tied in orbit around one another with a period of around 44 years.

Some surplus material sometimes ejected from red giant star forms spectacular loopy nebula.

- Bhumika Mhatre
(NEWSCASTER)

Ref: www.space.com

NATURE**FINE PARTICULATE MATTER FROM WILDFIRE SMOKE MORE HARMFUL THAN POLLUTION FROM OTHER SOURCES**

This new research work, focused on Southern California, reveals the risks of tiny airborne particles with diameters of up to 2.5 microns, about one-twentieth that of a human hair. These particles -- termed PM2.5 -- are the main component of wildfire smoke and can penetrate the human respiratory tract, enter the bloodstream and impair vital organs. The study appears March 5 in the journal *Nature Communications* by researchers from Scripps Institution of Oceanography and the Herbert Wertheim School of Public Health and Human Longevity Science at UC San Diego. It was funded by the University of California Office of the President, the National Oceanic and Atmospheric Administration (NOAA), the Alzheimer's Disease Resource Center for Advancing Minority Aging Research at UC San Diego and the Office of Environmental Health Hazard Assessment. To isolate wildfire-produced PM2.5 from other sources of particulate pollution, the researchers defined exposure to wildfire PM2.5 as exposure to strong Santa Ana winds with fire upwind. A second measure of exposure involved smoke plume data from NOAA's Hazard Mapping System. A 10 microgram-per-cubic meter increase in PM2.5 attributed to sources other than wildfire smoke was estimated to increase respiratory hospital admissions by 1 percent. The same increase, when attributed to wildfire smoke, caused between a 1.3 to 10 percent increase in respiratory admissions. Corresponding author Rosana Aguilera said the research suggests that assuming all particles of a certain size are equally toxic may be inaccurate and that the effects of wildfires -- even at a distance -- represent a pressing human health concern.

"There is a daily threshold for the amount of PM2.5 in the air that is considered acceptable by the county and the Environmental Protection Agency (EPA)," said Aguilera, a postdoctoral scholar at Scripps Institution of Oceanography. "The problem with this standard is that it doesn't account for different sources of emission of PM2.5." As of now, there is not a consensus as to why wildfire PM2.5 is more harmful to humans than other sources of particulate pollution. If PM2.5 from wildfires is more dangerous to human lungs than that of ambient air pollution, the threshold for what are considered safe levels of PM2.5 should reflect the source of the particles, especially during the expanding wildfire season. This is especially relevant in California and other regions where most PM2.5 is expected to come from wildfires. In Southern California, the Santa Ana winds drive the most severe wildfires and tend to blow wildfire smoke towards populated coastal regions. Climate change delays the start of the region's rainy season, which pushes wildfire season closer to the peak of the Santa Ana winds in early winter. Additionally, as populations grow in wild land urban interface areas, the risks of ignitions and impacts of wildfire and smoke increase for those who live inland and downwind. Coauthor Tom Corringham points to the implications for climate change: "As conditions in Southern California become hotter and drier, we expect to see increased wildfire activity. This study demonstrates that the harm due to wildfire smoke may be greater than previously thought, bolstering the argument for early wildfire detection systems and efforts to mitigate climate change."

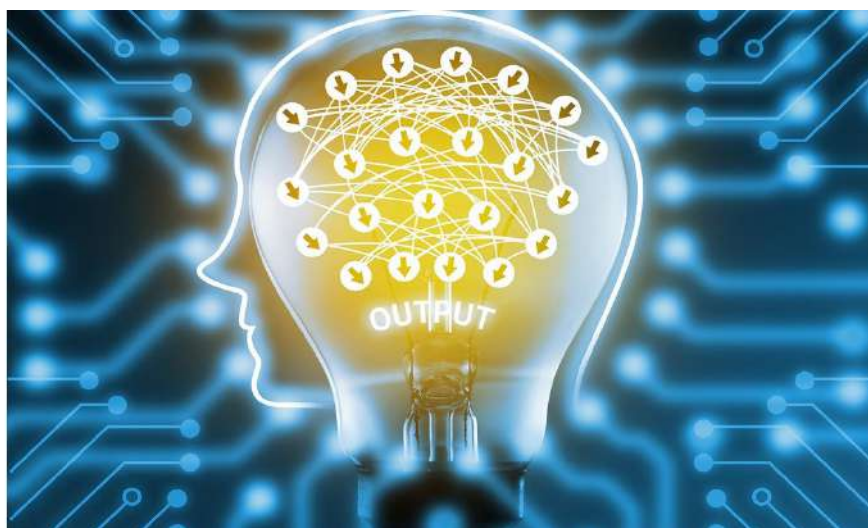
Facts: Wildfire smoke contains carbon monoxide, a colorless, odorless and toxic gas. Firefighters working near the fire are at greatest risk for high doses of carbon monoxide. Areas even a few hundred yards downwind of the fire where there are high particulate smoke levels typically don't have high levels of carbon monoxide.

Rishil Shetty
(NEWSCASTER)
Ref: www.sciencedaily.com

RESEARCH

THE ROLE OF RESEARCH ON SCIENCE TEACHING AND LEARNING

Research on science teaching and learning plays an important role in helping all students become proficient in science and making science education more equitable and inclusive, two goals called for in the Framework for K–12 Science Education (NRC 2012). NSTA promotes a research agenda that is focused on the goal of enhancing student learning through effective and equitable teaching practices that are based on current research. NSTA encourages ALL stakeholders in science education, including K–16 teachers of science and administrators, informal science educators, and school board members to recognize the importance of educational research, promote more research in schools, and participate in research when possible.



NSTA considers a broad range of activities to be within the scope of research, including research conducted by teachers that can lead to immediate classroom changes as well as research that contributes to a larger body of knowledge such as long-term or large-scale studies. Research on science teaching and learning involves identifying and asking appropriate questions, designing and conducting investigations, collecting evidence, drawing conclusions, and communicating and defending findings (NSTA 2004).



To produce research that has meaningful outcomes and the ability to improve the teaching and learning of science, NSTA advocates that research and practice be linked and support compatible goals. This synergistic relationship between research and practice includes teachers and researchers communicating goals, activities, and findings with the greater science education community in ways that make research accessible, understandable, meaningful, and relevant to teachers, administrators, and policy makers.

The process of research is the essence of the scientific enterprise and of scientific inquiry. Science education builds on the best of research in both worlds—science and education. By engaging in continual inquiry into teaching and learning, we can promote scientific literacy for students in the 21st century.

Pooja Mishra
(NEWSCASTER)
Ref: www.nsta.org

ACADEMICS**CAREERS WITH THE HIGHEST PROJECTED JOB GROWTH (MASTER'S DEGREE)**

- **Operations Research Analysts**

Operations research analysts provide much-needed support to management with various managerial functions, including policy formulation and decision making. They do this by analyzing data to identify problems and formulating and decision making.

Projected Job Growth: 28%

You need a master's degree in Operations Research or Management Science to qualify for this role. Operations research analysts must have a good grasp of the theory and applications of arithmetic, calculus, algebra, statistics, and also geometry.

- **Information Security Analysts**

These professionals develop, implement and monitor security measures for computer or information systems.

Projected Job Growth: 29%

Possible majors include Computer Science, Computer Systems Networking and Telecommunications, Computer and Information Systems Security / Information Assurance, and also Information Technology. Information security analysts have extensive knowledge of electronic equipment, circuit boards, processors, and computer hardware and software, including applications and programming.

- **Mathematicians**

Mathematicians are experts in applying mathematical principles or statistical approaches to solve problems related to science, management, and other fields.

Projected Job Growth: 29%

Mathematicians may have a master's degree in Mathematics, Applied Mathematics, Computational Mathematics, Topology and Foundations, or Analysis and Functional Analysis. Mathematicians have extensive knowledge of the theory and application of arithmetic, calculus, algebra, statistics, calculus, geometry, computers, and also electronics.

- **Statisticians**

Statisticians are responsible for gathering, organizing, interpreting, and summarizing numerical data to provide usable information. They often specialize in niche fields such as business statistics, bio-statistics, economic statistics, or agricultural statistics.

Projected Job Growth: 34%

There are several masters' degree programs that may qualify you for a career as a statistician. Possible majors include Statistics, Applied Mathematics, or Biostatistics, among others. Extensive knowledge of the theory and application of statistics, arithmetic, calculus, algebra and geometry are essential in this role. Statisticians also have in-depth knowledge of all aspects of computer and electronics including hardware and software programming and applications.

- **Physician Assistants**

Physician assistants work under the direct supervision of a qualified physician. Although the services they provide are similar to that of a qualified physician, their work is more supportive in nature.

Projected Job Growth: 37%

Physician assistants have a master's degree in Physician Assistant. In addition to extensive knowledge of medicine, physician assistants must also have good communication and interpersonal skills.

Saneha Jatav

(NEWSCASTER)

Ref: www.collegeraptor.com

MEDIA**ROLE OF SOCIAL MEDIA IN YOUTH ENTREPRENEURSHIP****Introduction:**

Youth is the Future of every nation & inheritors of the earth tomorrow. This statement stands true in every sense. When a country has a healthy youth population, you will find the country making headway in terms of overall development and progress. A country with high aging population and lower youth population has a lot of problems to content with that can slow its growth. Youth entrepreneurship has an impact on social as well as cultural and economic progress of the society. Building an environment that promotes creatively and provides opportunities for entrepreneurship calls for multi pronged strategies implementation and involvement at all levels including media (media + social media and networks) Entrepreneurship in any society is a sign of progress. The IT business in US has been the bedrock for youth entrepreneurship and created stars and multi-millionaires in Bill Gates, Steve Jobs to Google's Sergy Brin and Larry Page and many more. There are similar such stories in other countries too. However, the need of the day is to create many more stars and make available the opportunities for every youth to dream big and try their hands at entrepreneurship.

Brief:

Social media has become one of the biggest forces on the internet today. Millions of people visit social networking sites to watch videos, play games, post updates about their lives and communicate with friends, but did you know that it can also benefit your business? The following are the important benefit of social media to words young Entrepreneurs

Increase exposure

Exposure has always been important to businesses. It makes the company more visible and if done right, it can differentiate the firm from its competitors. And since hundreds of millions of people are now online and are taking to social networking sites, companies can leverage this to increase their exposure. Consider that each friend, follower, "Like", "+1" or retweet is a way to reach even more users, so when added up, the online exposure can be exponential in terms of the number of eyeballs looking at your latest post. If your business used to limit niche to a certain location, rest assured that your stage has now gone.

Improve Your Website's Traffic

If your company has a website of its own and you want to further grow its traffic, then social media should be an excellent way to do so. Each of you firm's social media profiles can direct your friends and followers to your website. Through social media, you can also link to your press releases and other online marketing materials, which can use your targeted keywords that improve your website's search engine optimization. In turn, improved traffic will lead to increased exposure for your company.

Provide Insight On Your Market

Want to know more about your specific market first-hand without having to spend on expensive reports? Then get busy with your company's social media presence. This would provide you a better understanding of your target market. To know what your community is thinking, all you have to do is ask a question and see how they respond. You can also look at what people say about your company and read their feedback about your products and services.

Increase Sales

Since social media gives your company a larger reach, develops your fan base, provides more customers and generates sales leads, it also increases your sales. Take note, however, that social media indirectly increases your company's sales.

Akanksha Bhardwaj

(NEWSCASTER)

Ref: www.academia.edu

ARTS & HISTORY**ELIZABETH -1**

Elizabeth I (7 September 1533 – 24 March 1603)[a] was Queen of England and Ireland from 17 November 1558 until her death in 1603. Sometimes called the Virgin Queen, Gloriana or Good Queen Bess, Elizabeth was the last of the five monarchs of the House of Tudor.

Elizabeth's foreign policy was largely defensive. The exception was the English occupation of Le Havre from October 1562 to June 1563, which ended in failure when Elizabeth's Huguenot allies joined with the Catholics to retake the port. Elizabeth's intention had been to exchange Le Havre for Calais, lost to France in January 1558.[114] Only through the activities of her fleets did Elizabeth pursue an aggressive policy. This paid off in the war against Spain, 80% of which was fought at sea.[115] She knighted Francis Drake after his circumnavigation of the globe from 1577 to 1580, and he won fame for his raids on Spanish ports and fleets. An element of piracy and self-enrichment drove Elizabethan seafarers, over whom the queen had little control.[116][117]

Elizabeth was lamented by many of her subjects, but others were relieved at her death.[206] Expectations of King James started high but then declined. By the 1620s, there was a nostalgic revival of the cult of Elizabeth.[207] Elizabeth was praised as a heroine of the Protestant cause and the ruler of a golden age. James was depicted as a Catholic sympathiser, presiding over a corrupt court.[208] The triumphalist image that Elizabeth had cultivated towards the end of her reign, against a background of factionalism and military and economic difficulties,[209] was taken at face value and her reputation inflated. Godfrey Goodman, Bishop of Gloucester, recalled: "When we had experience of a Scottish government, the Queen did seem to revive. Then was her memory much magnified." [210] Elizabeth's reign became idealised as a time when crown, church and parliament had worked in constitutional balance.

Ashutosh keni
(NEWSCASTER)
Ref: en.wikipedia.org

MINAKSHI TEMPLE

Arulmigu Meenakshi Sundareshwarar Temple[3] is a historic Hindu temple located on the southern bank of the Vaigai River[4] in the temple city[5] of Madurai, Tamil Nadu, India. It is dedicated to Thirukamakottam udaya aaludaiya nachiyar (Meenakshi), a form of Parvati, and her consort, Sundareshwar, a form of Shiva.[6][7] The temple is at the center of the ancient temple city of Madurai mentioned in the Tamil Sangam literature, with the goddess temple mentioned in 6th century CE texts.[8] This temple is one of the Paadal Petra Sthalam. The Paadal Petra sthalam are 275 temples of lord Shiva that are revered in the verses of Tamil Saiva Nayanars of 6th-9th century CE.

The Meenakshi Amman temple is an active house of Hindu worship. Priests perform the puja ceremonies on a daily basis and during festivals.[103] Volunteers and temple staff also participate in daily rituals, such as symbolically moving an icon of Sundaesvara in a palanquin to Meenakshi's chamber every night so that they can be together, then waking the two and returning Sundaesvara to his shrine every morning.[16] There are periodic ratha (chariot) processions where one of the metal copy icon of the goddess is taken out of the temple in an elaborate car shrine decorated with colorful clothes and flowers, with volunteers pulling the car through the streets of Madurai and circumambulating the temple complex on one of the concentric roads in the old city. This symbolizes her mythical conquests and her presence in the secular life of the people.[16] The temple has a six time pooja calendar everyday, each comprising four rituals namely abhisheka (sacred bath), alangaram (decoration), neivethanam (food offerings[^{note 3}]) and deepa aradanai (lamp ceremony) for both Meenakshi and Sundaeswarar.[105] The rituals and festivals are accompanied with music with nadhaswaram (pipe instrument) and tavil (percussion instrument), recitation of the Vedas

Ashutosh keni
(NEWSCASTER)
Ref: en.wikipedia.org

LIBRARY**PINGALA - CREATOR OF BINARY SYSTEM**

“Physically separated but digitally connected!” should be our motto in these days of the Coronavirus pandemic. Truly speaking digital technologies have enabled us to get through these days of lockdown.

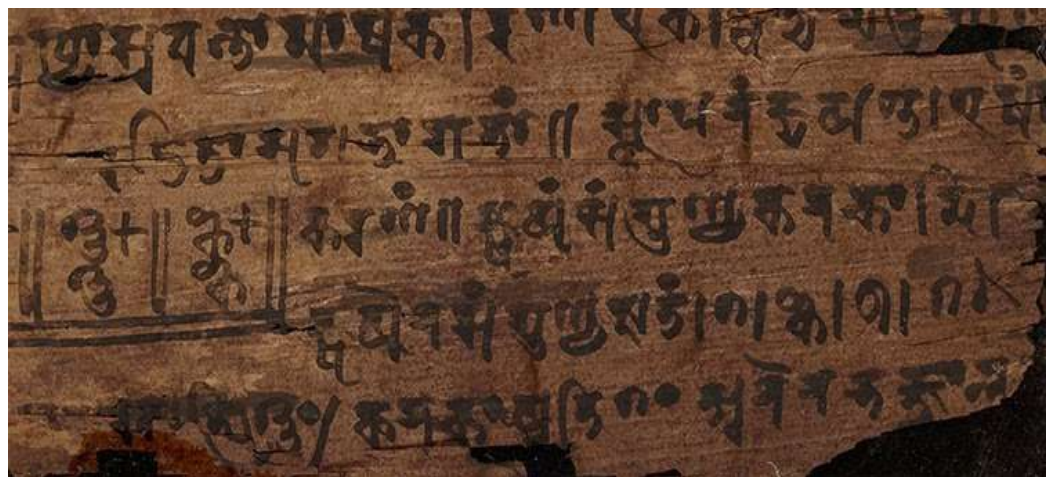
Do you know, what is the fundamental principle on which today’s digital technology works? It is the binary number system.

But, do you know that this is the gift of ancient Indian mathematics to the world of technology. Ancient Indian prosodist and mathematician Pingala was the first to develop and use the binary number system while studying and analysing Sanskrit poetic meters (chandah / छन्दः) in his work Chandahshastra composed around 3rd century.

The binary number system has been the most impactful numerical system in the history of technological development. Over hundreds of years, discoveries within binary theory led to the invention of electric circuitry and, consequently, the first computer ENIAC, seventy years ago.

Who discovered binary code? The discovery of the binary system is mainly attributed to Gottfried Wilhelm Leibniz in the 17th century. In his paper “Explanation of Binary Arithmetic”, Leibniz proposed a binary digit system. However, earlier civilizations in Egypt and China used the binary system for rudimentary counting and arithmetic.

Binary numbers, number system, decimal codes, computer and technology, Binary codes, information theory, digital logic gate these things are co-related with each other. Binary numbers we generally come to know about this number system in our junior year computer class and we used to solve this kind of binary problems like convert the decimal number to binary number.



So let’s know what is binary number system binary number is a number expressed in the base-2 numeral system or binary numeral system, which uses only two symbols: typically “0” (zero) and “1” (one). A binary code represents text, computer processor instructions, or any other data using a two-symbol system. The two-symbol system used is often “0” and “1” from the binary number system. The binary code assigns a pattern of binary digits, also known as bits, to each character, instruction, etc

The binary number system theory or binary code, source show that the modern binary number system, the basis for binary code, was invented by Gottfried Leibniz in 1689 and appears in his article Explication de l’Arithmétique Binaire. The full title is translated into English as the “Explanation of the binary arithmetic”,

Acharya Pingala an ancient Indian mathematician invented binary system, it is assumed that he was 1st inventor of binary system in the world. Acharya Pingala authored Chandahśāstra (Pingala-sutra) or Chandhas refers to one of the six Vedangas or limbs of vedic studies Chandahśāstra literally translate to science of meters in Sanskrit. Pingala used binary numbers in the form of short and long syllables making it similar to Morse code, here the binary numbers increased toward the right and not to the left like in The modern binary system, in this book number started from 1 not 0. Pingala used laghu(light) and guru(heavy) rather than 0 and 1 described syllables, (four short syllables—binary “0000”—is the first pattern),

That the binary code was invented in India is hardly a surprise. Not long ago, scientists discovered a very intriguing ancient Indian text known as the Bakhshali manuscript that re-writes history of number zero and mathematics.

Vaibhavi Nijampurkar
(Newscaster)
Ref: awesomeaj.com

FOOD & HEALTHCARE**THREE MYTHS ABOUT FOOD AND NUTRITION****MYTH: Raw Food is Better Than Cooked**

It's true that the act of heating up food while cooking can destroy certain nutrients. Vitamin C is a fairly unstable compound, and exposing it to oxidation and high heat can damage it. The method of cooking can also make a difference. Certain vitamins are water soluble, which means they can seep into the water when boiling or steaming. In these cases, tossing the water means tossing the vitamins. However, if you boil veggies for a soup and keep the water for the broth, then you retain most of the benefits.

On the other hand, some nutrients actually become more bioavailable when cooked. Cooking breaks down the fibrous walls of plant foods, which makes it easier for you to absorb certain nutrients that are closely bound to parts of the plant that are difficult to digest. If you cook tomatoes, the amount of bioavailable lycopene and phytonutrients increases. If you consume your tomatoes cooked, it takes fewer tomatoes for you to get the same amount of lycopene than it would if you ate them raw. Lycopene is an antioxidant that may help to prevent cancer, especially prostate cancer.

CONCLUSION: Eating a variety of fresh and cooked foods is your best bet.

MYTH: Fresh Produce is Always Best

Biting into a ripe apple plucked straight from a tree is a delicious experience, but it is not one that's easily replicated when buying produce from the grocery store. It makes intuitive sense to imagine that fresh fruits and veggies are healthier than their frozen counterparts; when you compare the food in its natural, brightly-coloured form to that in a plastic bag in the freezer aisle, it seems so obvious that fresh is better. However, the produce you purchase from an average grocery store, or even a high-end organic store, is often quite old. Before you bring it home, it goes through harvesting, processing, packaging, shipping, and then lands in your grocery store. Fresh produce can be days to weeks old, depending on the type of produce and where it was grown, and has lost some nutrients. It's no longer quite the same as that tree-plucked apple.

Of course, if you are eating produce that you freshly picked from your garden, purchased directly from a local farmer, or produce that naturally lasts a long time (such as root vegetables), then this doesn't apply.

Paradoxically, where frozen produce is concerned, suppliers typically harvest fruits and vegetables when they are perfectly ripe and freeze them immediately after harvesting them. This means that you end up with a product that is frozen in time with its nutrients intact and no need for ripening sprays. They also tend to be less pricey than fresh produce.

CONCLUSION: Frozen and canned produce are inexpensive sources of nutritious fruits and vegetables.

MYTH: Eating Certain Foods Can Make Your Body Alkaline

Proponents of what is called the 'alkaline diet' or 'alkaline ash diet' claim that if you eat certain foods your body will become more alkaline, which supposedly leads to better health, while other foods can make your body more acidic, leading to illness. However, their definition for alkaline is not straightforward.

We use the pH scale to describe the acidity of various items. Vinegar has a pH of 3, which is very acidic, pure water has a pH of 7, which is neutral, and baking soda has a pH of 9, which is alkaline (also called basic). When people speak of the alkaline diet and alkaline foods, they aren't referring to the pH of the foods themselves, but rather of the behaviour they exhibit in the body. When your body digests certain foods, the remains, called 'ash', are either acidic or alkaline, depending on the food. The idea is that this ash affects the pH of various parts of your body, causing beneficial or negative effects.

CONCLUSION: You can't change the pH of your body by eating certain foods.

Aishwarya Pathare
(NEWSCASTER)
Ref: badgut.org

CULTURE & CUISINE**WHY IS HOTDOG CALLED A HOT DOG?**

1) Here's why we call it Hot Dog?

Let's admit it. The hot dog looks nothing like 'hot dogs'. While we might relish the genius of serving a flavourful sausage in a bun, all of us have wondered at one point why exactly they are called 'hot dogs'. Now a popular American street food, the hot dog has an interesting and rich history. While the etymology of the term 'hot dog' is unknown, it is inextricably linked with the history of sausages. There are also two probable theories that can shed some light on the evolution of hot dogs in their present form.

2) Why the Name?

The credit of naming hot dogs goes to a sports cartoonist for the New York Times, Tad Dorgan. Hot dogs were called 'red hots' or 'dachshund sausages' before it took its current elusive name. When vendors in the New York Polo Grounds in 1901 were screaming, "They're red hot! Get your dachshund sausages while they're red hot!", the cartoonist observed and drew barking dachshund sausages in a warm roll. He didn't know how to spell 'dachshund' so he simply wrote 'hot dog!'. This cartoon went on to become a sensation and the term 'hot dog' was coined. Although the historians have been unable to find a copy of the cartoon, the term was already in use in the 20th century.

3) Sausage & the Hot Dog

Sausages contain ground meat, spices and herbs stuffed tightly into a casing. Hot dogs are sausages that are cured, smoked or cooked. They also come in different sizes. The origin of the first hot dog has been traced to Rome, from where it was eventually brought to Germany. The Germans experimented with the hot dog and came up with different versions, which they brought to the United States in around 1860s and began selling them on pushcarts. The German immigrants brought not just sausages but also dachshunds when they came to the United States. The name 'hot dog' possibly began as a joke about their thin, long and small dogs. In fact, the Germans called their dish 'dachshund sausages' or 'little dog', thus connecting the term 'dog' to the hot dog.

4) The Bun Came Later!

There are two theories about the inclusion of the buns in the hot dog, giving them their present form. In St. Louis, 1880s, street vendors selling red hots used to pass white gloves to protect their customer's hands from scalding. People then began to take just the gloves, which led a particular vendor to ask his baker brother-in-law for help who suggested enclosing the red hots in a bun.

Bhavna Sayekar
(NEWSCASTER)

Ref : timesofindia.indiatimes.com

TRADITIONAL EASTER FOODS FROM AROUND THE WORLD

Roasted Lamb

Lamb is the one food that is common in the Easter celebrations of many cultures. The roasted lamb dinner that many eat on Easter Sunday actually predates Easter—it is derived from the first Passover Seder of the Jewish people. You will find recipes featuring different flavorings and spices depending on the dishes' origin, but this simple version uses somewhat universal ingredients, like garlic, lemon, and herbs, which are rubbed on the lamb before roasting.

Polish Jajka Faszerowany (Polish Stuffed Eggs)

In Poland, the Easter brunch buffet table is plentiful, showcasing some of the country's best dishes. One of the staples you will find is faszerowany jajka, which are stuffed eggs that are similar to deviled eggs, except they're broiled with a breadcrumb topping. They have a delicious filling of ham, cheese, sour cream, and mustard, making them hard to resist.

Polish Żurek (Ryemeal Soup)

The Polish Easter brunch also typically includes a ryemeal soup known as żurek. The base of the soup is zur, fermented rye flour (referred to as ryemeal sour), which is started the week leading up to the holiday. In the soup are biała kiełbasa, or Polish sausage, made from the family's own recipe, as well as potatoes and hard-cooked eggs.

Polish White Borscht Soup

A white borscht soup, called either biały barszcz or żurek wielkanocny, is also a Polish tradition. Recipes for this dish are passed down through generations, so each is unique. Typically, you will find potatoes, garlic, sour cream, kielbasa, eggs, and rye bread as the ingredients.

Ruchi Soni
(Newscaster)

Ref: recipes.timesofindia.com, medium.com

TRAVEL & TOURISM

"BUDDHA, MAHABODHI TREE AND THE LAND OF NIRVANA"

Bodh Gaya Tourism :

Bodh Gaya is a Buddhist pilgrimage site in Gaya District of Bihar. Famous for the Mahabodhi Temple, It was here under the Bodhi tree that Gautama Buddha attained enlightenment.

It is now one of the UNESCO World Heritage Sites, and a lot of foreign countries, including Japan and China, have helped the Indian government in building facilities for the Buddhist pilgrims. The place is bustling with pilgrims all through the year from India and abroad who come to pay their homage in monasteries, temples and remnants of Bodhi Tree.

Located near the river Neranjana, Bodh Gaya was earlier known as Uruwela. It was also known as Sambodhi, Vajrasana or Mahabodhi until the 18th century CE. It is one of the four important Buddhist sites that include: Kushinagar, Lumbini and Sarnath.

Places To Visit In Bodh gaya :

Mahabodhi Temple.

Great Buddha Statue.

Tibetan Refugee Market.

Bodhi Tree, Bodh Gaya.

**What is the best time to visit Bodh Gaya?**

October to March is ideal for a visit according to the weather conditions, but tourists flock here throughout the year. Post-October, a lot of monks, flock from Dharamshala to Bodh Gaya and the city is coloured with maroon robes. Dalai Lama himself spends some time here during December and January. Visitors also flock here in the month of Vaisakh (April-May) to celebrate the Buddha Purnima, the auspicious day when Siddhartha had attained enlightenment.

-Rhea Devadiga
(Newscaster)

Reference :- www.holidify.com

NATURE'S ABODE- WAYANAD, KERALA

Introduction:

Replete with waterfalls, historical caves, comfortable resorts and homestays, Wayanad in Kerala is famous for its spice plantations and wildlife. Walking through the sprawling spice plantations, trekking to the pre-historic caves and experiencing a resort holiday are one of the many things you can do to get a taste of Wayanad. Wayanad is best known for the wildlife reserves - Wayanad wildlife reserve which is home to an exquisite variety of flora and fauna. Wayanad wildlife reserve is an integral part of the Nilgiri biosphere reserve peacefully located amidst the serene hills of Western Ghats. Wayanad homes a wide variety of wildlife like elephants, leopards, and bears. Wayanad is a perfect weekend idea from the cities of South India. If taking a road trip from Bangalore, you will drive through three national parks: Nagarhole, Bandipur and Mudumalai.

How to Reach Wayanad?

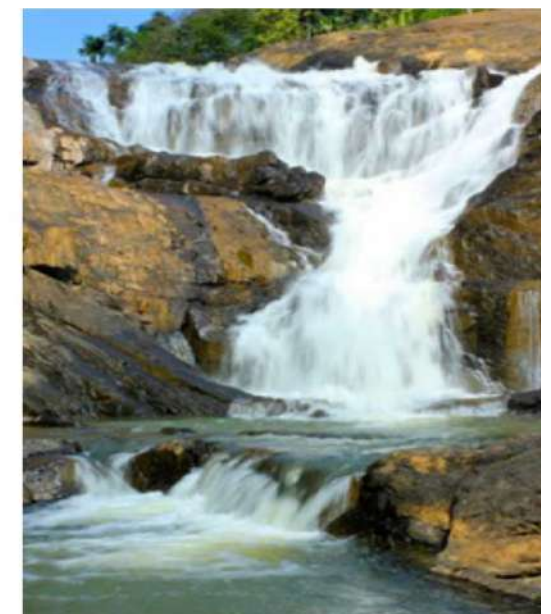
Kozhikode has the nearest airport and railhead 90 km away. Good roadways also allow for a long drive or a bus trip from Kozhikode or any other South Indian city. Numerous taxis take off the travel anxiety.

Best time to visit Wayanad:

The temperature in Wayanad remains more or less constant throughout the year, but the best time to visit Wayanad is between October and May. These months covers the winter and the beginning of the summer season. During the monsoons, the hill station receives the right amount of rainfall and the wet and humid weather might not be something tourists would be crazy for. So it is not always recommended except for those who wouldn't mind the rains only to be amidst the beautiful hill station covered with a green carpet of dense trees.

Places To Visit In Wayanad:

Bansura Sagar Dam
Edakkal Caves
Chembra Peak
Soochipura Falls
Nagarhole National Park



-I anvi Kendule
(Newscaster)

Reference :- www.holidify.com

SPORTS**ENVIRONMENTAL CHANGES SPORTS****Warm Weather Sports**

As the world warms, one often overlooked issue is climate change's influence on sports and recreation. While not as life-threatening as extreme weather or as costly as droughts, the impact on sports is something that's becoming increasingly common. Athletes are uniquely aware of the connection between health and performance, and how conditions impact health. Players win when they push their bodies to the limit, which makes them more susceptible to changing environments.



The Climate Institute released a report on the threat of climate change to sports in Australia. One particularly compelling example is the Australian Open, which revised its heat policy for 2015, setting an upward limit on ambient temperatures in which athletes can play after 2014's extreme heat became a serious health issue, causing hallucinations, vomiting and fainting. Before passing out in the "inhuman" 108°F heat, Frank Dancevic saw Snoopy on the court. Chinese player Peng Shuai vomited before cramping up. One player's shoes melted, as did another's water bottle and Jelena Jankovic burned her bottom on an uncovered seat. In the 2015 US Open, athletes competed in temperatures exceeding 90 degrees with 40 percent humidity during the first round, leading to a record 10 retirements due mostly to heat stress. The US Open is the latest in a series of US athletic events that have faced unusual and dangerous climate conditions. While US Open competitor Roger Federer said, "heat really shouldn't matter," John Isner responded, "It's not a fitness thing...that's a big, big misconception." If you look at the science, Isner is right. In very dry conditions, humans can be physically active outdoors in temperatures of up to 104°F, but in humid conditions, the cutoff drops below 86°F because it is harder for the body to cool itself through sweating and evaporation. When the combination of heat and humidity becomes too high, continued exposure to heat leads to heat illness. As climate change drives temperatures higher and makes heat waves more frequent, we can expect to see more risks to athletes, from professionals to high schoolers.

However, the coach and the athlete must understand that training is a comprehensive process that harmonizes a myriad of factors to foster athlete development. Figure 1 depicts some of these factors that affect athletic performance. Therefore, the sport coaches, strength and conditioning staff, and sports medicine professionals each play an important role within their own disciplines to contribute to an athlete's development. In addition, the management of external stressors in the athlete's daily life is also an important component in the optimization of performance. To achieve this objective, however, training variables must be integrated in a sequence over the course of the training process (79). The training process is traditionally organized into 3 basic levels: macrocycles, mesocycles, and microcycles (79). A macrocycle is a long-duration training cycle, typically classified as 12 months of training, which are composed of multiple mesocycles. Mesocycles are moderate-length periods of training, which can focus on developing specific fitness characteristics within the macrocycle.

It was traditionally believed that strength training would inhibit running performance, fearing that an increase in overall bodyweight from increased muscle mass and change in cell physiology (16) would slow down the athlete. Also, engaging in a form of exercise that includes lifting weights explosively was seen as very dissimilar from an endurance runner's typical form of training (3).

Traditional concerns aside, modern day training programs for elite long-distance runners are certain to include explosive resistance training exercises.

Prachi Chaudhari
(Newscaster)
Reference

(<https://climatenexus.org/climate-issues/climate-change-and-sports/>)

SOCIAL ISSUES**COVID-19 CASES ARE RISING AGAIN**

After a period of decline, we are now seeing a rise in Covid-19 cases in India. COVID-19 appeared to be the back foot, as the number of active infections started to taper away in India. The three major aspects of the pandemic the curve of cases, deaths and hospitalisations started to plummet across the country. Many believed this may be the end of the pandemic after a year full of economic and social hardship. Fresh COVID-19 cases, however, are showing a worrying upward trend over the past weeks. India reported a single-day rise of 16,752 cases taking the overall tally to 1,10,96,731, as per Union Health Ministry. The rise is highest since more than a month. The fresh surge in many states this month has dashed hopes that the pandemic was retreating.



Scientists believe this is an important phase in the pandemic, as apprehensions are ripe that cases may begin to rise again, the level of immunity against it remains uncertain. It's not just Maharashtra where cases have grown recently. Some areas in Kerala, Karnataka, Telangana, Madhya Pradesh, Chhattisgarh and Punjab states have also reported surges. Many epidemiologists see most common reason for the spike in some states is that normalcy is returning to people's lives: weddings, cinema halls, gyms and swimming pools, markets, people not wearing masks and large political rallies in election-bound states. Scientists point out although there is an aggressive vaccination drive in progress in the country, it will take a few months to make a dent in the pandemic. You may be a carrier of COVID-19 and be asymptomatic. By wearing a mask you're stopping the spread and protecting others.

Wear a Face Mask to Protect Each Other.

By Aakanksha Vadvalkar

Sybm B

Sources - <https://www.bbc.com/news/world-asia-india-56206004>

GENDER DISCRIMINATION – THE UNFINISHED BUSINESS OF 21ST CENTURY

Every child has the potential to achieve astounding things. India is a patriarchal society, which likes to hold on to its traditional beliefs and practices for instance, women living in rural areas are not allowed to go to school. They are asked to stay at home, do the household chores and look after their little siblings. As soon as they hit puberty, they are married off whether or not they are ready for it. Poverty and illiteracy play their part in such ill practices against women. The recent deaths of babies facing cruelty at the hands of relatives have shocked the country. But it is true that gender discrimination is not confined to one particular economic class or section or a community. Dowry deaths, marital rapes, etc. are few of the evils of the society still tormenting women. Recently you must have heard a case where **23-year-old Ayesha died by suicide by jumping into the Sabarmati river in Ahmedabad because her husband** used to harass her to bring dowry money because of the third woman. According to sociologists, Problem is acute because mothers are often unable to speak up for their children. They have limited rights within family and practically no decision-making powers. There is no dearth of laws but the implementation needs to be tightened. The need of the hour is to make a change in the mindset of the society and destroy the prejudices that damage the future of the girl child. What is required is a concerted effort to sensitize the society in eradicating this issue of gender inequality. It is high time that every child is treated equally and given every opportunity required to grow to his/her full potential.

Aakanksha Vadvalkar

(Newscaster)

Reference: [Http://www.Azadindia.Org/Social-Issues/Gender-Discrimination.Html](http://www.Azadindia.Org/Social-Issues/Gender-Discrimination.Html)

STUDENT'S SECTION

RIDDLES

1. I have lakes with no water, mountains with no stone and cities with no buildings. What am I?
2. What 4-letter word can be written forward, backward or upside down, and can still be read from left to right?
3. What has a head and a tail but no body?
4. What gets bigger when more is taken away?
5. What has many needles, but doesn't sew?
6. What kind of coat is best put on wet?
7. A girl has as many brothers as sisters, but each brother has only half as many brothers as sisters. How many brothers and sisters are there in the family?
8. If you're running in a race and you pass the person in second place, what place are you in?
9. If you've got me, you want to share me; if you share me, you haven't kept me. What am I?
10. What is so fragile that saying its name breaks it?

- Jidnyasa Patil
(Newscaster)

Ref: https://parade.com/947956/parade/riddles/amp/#aoh=16167524398210&referrer=https%3A%2F%2Fwww.google.com&_tf=From%20%251%24s

SUDOKU PUZZLE

5	3			7				
6			1	9	5			
	9	8					6	
8				6				3
4			8		3			1
7				2				6
	6					2	8	
			4	1	9			5
				8			7	9

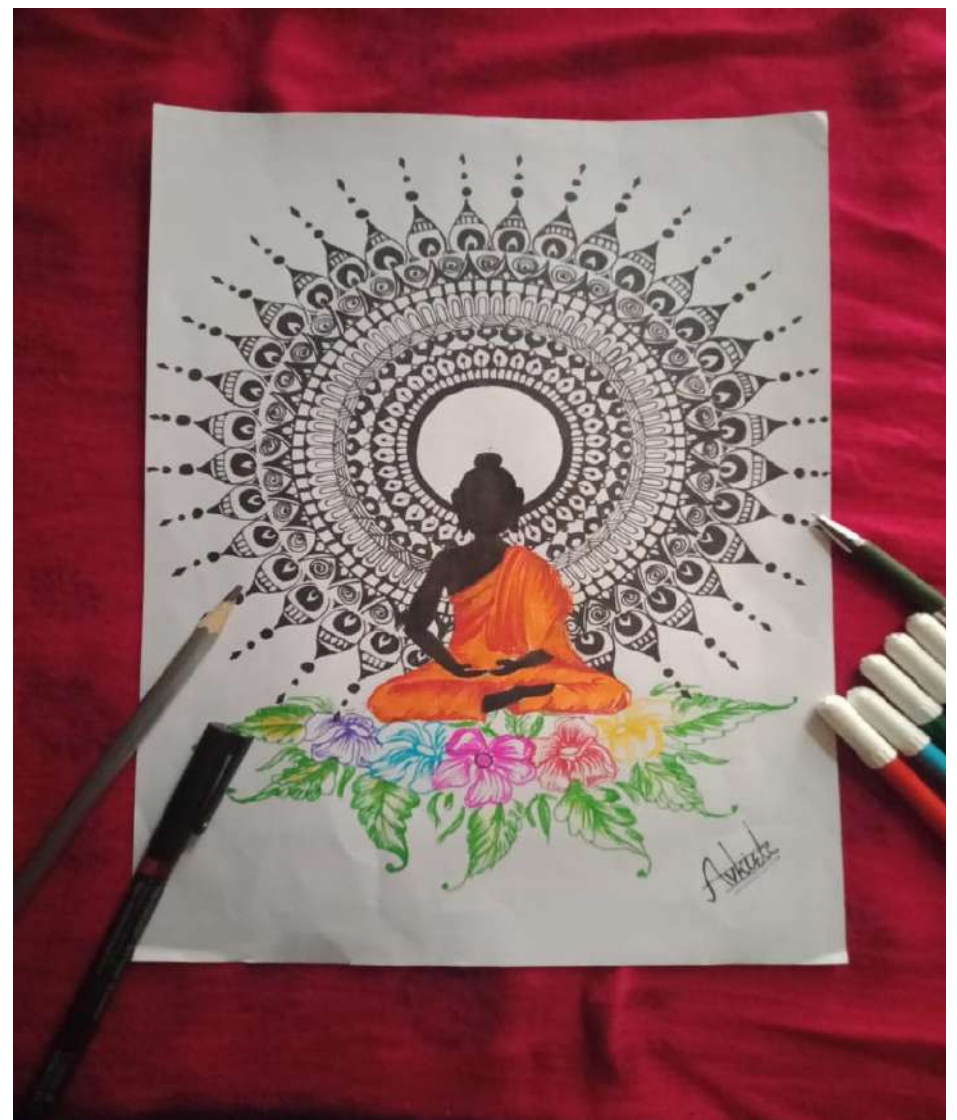
FUN FACTS

1. One species of jellyfish is immortal. It can revert back to its child state after having become sexually mature, and therefore never dies.
2. A snail can sleep for three years at a time.
3. There are 1 million ants for every human in the world.
4. A bat can eat up to 1 thousand insects per hour.
5. Octopuses have three hearts.
6. Dogs' sense of smell is about 100,000 times stronger than humans'. However, they have only one-sixth our number of taste buds.
7. The now extinct colossal penguin stood as tall as 2.03 metre basketball legend LeBron James.
8. Reindeer eyeballs turn blue in winter to help them see at lower light levels.
9. Honeybees can flap their wings 200 times per second.
10. At birth, a panda is smaller than a mouse and weighs about four ounces.

- Jidnyasa Patil
(Newscaster)

Ref. - (<https://thecarousel.com/living/29-amazing-animal-facts/>)

ART BY STUDENT



**Akanksha Kirte
Sybms**

CREDITS

CHIEF EDITOR

VIDISHA MAPUSKAR

CREATIVE DIRECTOR

OMKAR KANDAR

DESIGNERS

DEVI DHAMANKAR

DIVYA DAVE

PHOTO EDITOR

PRANAY YADAV

COPY EDITOR

SIMRAN FERNANDES

PROOF READERS

HARSH GOHIL

MUSKAN KHAN

PRODUCTION MANAGER

NIGEL THOMAS

DEPARTMENT EDITORS

PAYAL GAGAT

DISHA AMIN

AJAY LOVEKAR

SAVITRI PANDIT

YASHHASHREE GODBOLE

MARYAM SAYED

HETAL PARMAR

AISHWARYA PATHARE

RASHI WALINJKAR

VEDANT DALVI

RUTUJA SURVE

YASHIKA PATEL

SHRISTI SUVARNA

GAYATRI KELKAR

POOJA MISHRA

SWARANGI RAORANE

ADVISORY

DR. S.B. SAWANT

(PRINCIPAL)

DR. MALA KHARKAR

(CHIEF EDUCATION OFFICER)

Ms. RUCHITA RANE

(CHIEF CO-ORDINATOR)

CONVENER

Ms. SWATI TAKKAR

(BMS CO-ORDINATOR)

ORGANISING COMMITTEE

Ms. POOJA CHODANKAR

Ms. NISHA GUPTA

Ms. SONAL HIPALGAONKAR

SUGGESTIONS, QUERIES, COMMENTS AND

EVEN CRITICISM ARE WELCOME

PLEASE FEEL FREE TO WRITE US AT

bmsperiodical@gmail.com